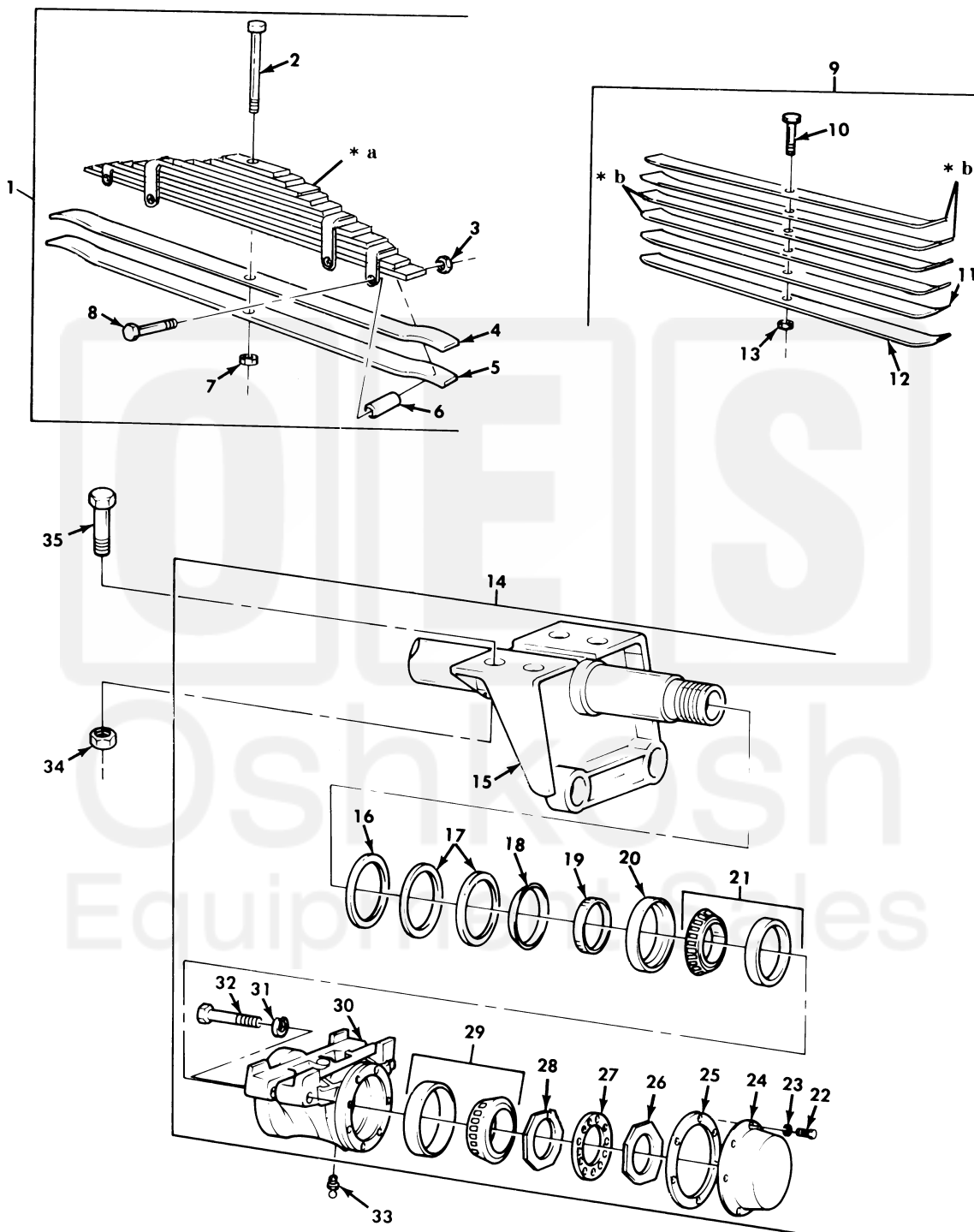


UNIT, DIRECT SUPPORT, AND GENERAL SUPPORT MAINTENANCE
REPAIR PARTS AND SPECIAL TOOLS LIST
TRUCK, 5-TON, 6X6, M809 SERIES TRUCKS (DIESEL)



* a PART OF ITEM 1

* b PART OF ITEM 9

Figure 246. Rear Leaf Spring and Seat Assemblies.

(1) ITEM NO	(2) SMR CODE	(3) NSN	(4) CAGEC	(5) PART NUMBER	(6) DESCRIPTION AND USABLE ON CODE (UOC)	(7) QTY
GROUP 1601 SPRINGS						
FIG. 246 REAR LEAF SPRING AND SEAT ASSEMBLIES						
1	PAOOO	2510-00-741-1114	19207	7411114	SPRING ASSEMBLY, LEA REAR.....	2
					UOC: 620, 621	
1	PAOOO	2510-00-740-9613	19207	7409613	SPRING ASSEMBLY, LEA REAR.....	2
					UOC: 614, 623, 624, 625, 626, 627, 628, 629, 630, 631, 632, 633, 634, 635, 637, 638	
2	PAOZZ	5305-00-139-7072	19207	10883200	.SCREW, MACHINE REAR SPRING, CENTER..	1
					UOC: 614, 623, 624, 625, 626, 627, 628, 629, 630, 631, 632, 633, 634, 635, 637, 638	
2	PAOZZ	5305-00-139-7075	19207	10883199	.SCREW, MACHINE REAR SPRING, CENTER..	1
					UOC: 620, 621	
3	PAOZZ	5310-00-891-1711	96906	MS35691-25	.NUT, PLAIN, HEXAGON.....	4
					UOC: 614, 620, 621, 623, 624, 625, 626, 627, 628, 629, 630, 631, 632, 633, 634, 635, 637, 638	
4	PAOZZ	2510-00-741-1116	19207	7411116	.SPRING, LEAF.....	1
					UOC: 620, 621	
4	PAOZZ	5360-00-740-9602	19207	7409602	.SPRING, LEAF.....	1
					UOC: 614, 623, 624, 625, 626, 627, 628, 629, 630, 631, 632, 633, 634, 635, 637, 638	
5	PAOZZ	5360-00-741-1115	19207	7411115	.SPRING, LEAF.....	1
					UOC: 620, 621	
5	PAOZZ	2510-00-740-9601	19207	7409601	.SPRING, LEAF.....	1
					UOC: 614, 623, 624, 625, 626, 627, 628, 629, 630, 631, 632, 633, 634, 635, 637, 638	
6	PAOZZ	5365-00-740-9612	19207	7409612	.SPACER, BOLT.....	4
					UOC: 614, 620, 621, 623, 624, 625, 626, 627, 628, 629, 630, 631, 632, 633, 634, 635, 637, 638	
7	PAOZZ	5310-00-732-0560	96906	MS51968-14	.NUT, PLAIN, HEXAGON.....	1
					UOC: 614, 620, 621, 623, 624, 625, 626, 627, 628, 629, 630, 631, 632, 633, 634, 635, 637, 638	
8	PAOZZ	5305-00-717-3999	96906	MS90725-103	.SCREW, CAP, HEXAGON H.....	4
					UOC: 614, 620, 621, 623, 624, 625, 626, 627, 628, 629, 630, 631, 632, 633, 634, 635, 637, 638	
9	PAOOZ	2510-00-277-9786	19207	8327139	SPRING ASSEMBLY, LEA.....	2
					UOC: 622	
10	PAOZZ	5306-00-446-8762	19207	7017002	.BOLT, MACHINE SPRING, CENTER.....	1
					UOC: 622	
11	PFOZZ	2510-00-318-0960	19207	8327210	.SPRING, LEAF.....	1
					UOC: 622	
12	PAOZZ	2510-00-318-0959	19207	8327209	.SPRING, LEAF.....	1
					UOC: 622	
13	PAOZZ	5310-00-943-2141	96906	MS51968-15	.NUT, PLAIN, HEXAGON REAR SPRING, CENTER.....	1
					UOC: 622	
14	PAOOO	2510-00-191-8172	19207	7346962	SEAT ASSEMBLY, SPRIN REAR SPRING....	2
15	PAOZZ	4710-00-740-9607	19207	7409607	.TUBE ASSEMBLY, CROSS.....	1
16	PAOZZ	5310-00-740-9615	19207	7979265	.WASHER, FLAT.....	2
17	PAOZZ	5330-00-740-9312	78500	5X625	.FELT, MECHANICAL, PRE.....	4
18	PAOZZ	5330-00-740-9606	19207	7409606	.RETAINER, PACKING.....	2
19	PAOZZ	2590-00-740-9553	19207	7409553	.RING, WIPER.....	2
20	PAOZZ	5330-00-740-9550	19207	7979349	.SEAL, PLAIN ENCASED.....	2
21	PAOZZ	3110-00-689-8250	01212	593A-592A	.BEARING, ROLLER, TAPE.....	2
22	PAOZZ	5306-00-225-8496	96906	MS90725-31	.BOLT, MACHINE.....	12
23	PAOZZ	5310-00-407-9566	96906	MS35338-45	.WASHER, LOCK.....	12
24	PAOZZ	5340-00-740-9391	19207	7979306	.COVER, ACCESS.....	2
25	PAOZZ	5330-01-382-5925	19207	7979274 NON-ASBE STOS	.GASKET.....	2
26	PAOZZ	5310-00-353-2427	19207	7979263	.NUT, PLAIN, OCTAGON.....	2
27	PAOZZ	5310-00-700-7089	19207	5139123	.WASHER, KEY.....	2